

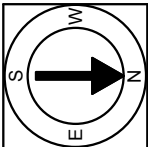
First Floor Plan
Ceiling Height = 9'-0"

1564 Massachusetts Avenue
Cambridge, MA 02138



Scale 1/8" = 1'-0"

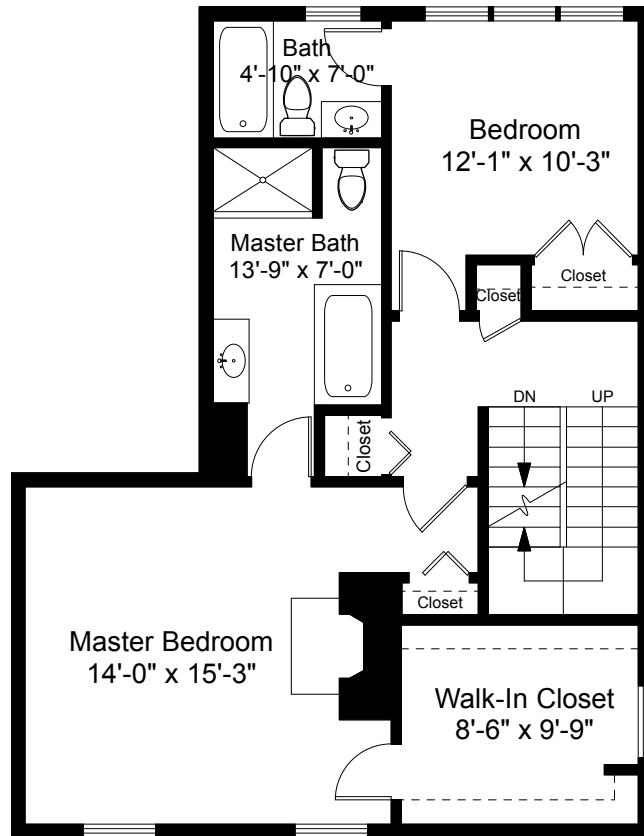
1



Completed: April 2017

Note: Dimensions are not guaranteed and are provided for informational purposes only. Individual room dimensions are not used to calculate overall square footage.

NATIONAL
—FLOOR PLANS—
& PHOTOGRAPHY
(800) 328-0217



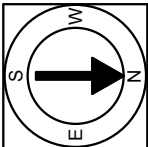
Second Floor Plan
Ceiling Height = 7'-9"

1564 Massachusetts Avenue
Cambridge, MA 02138



Scale 1/8" = 1'-0"

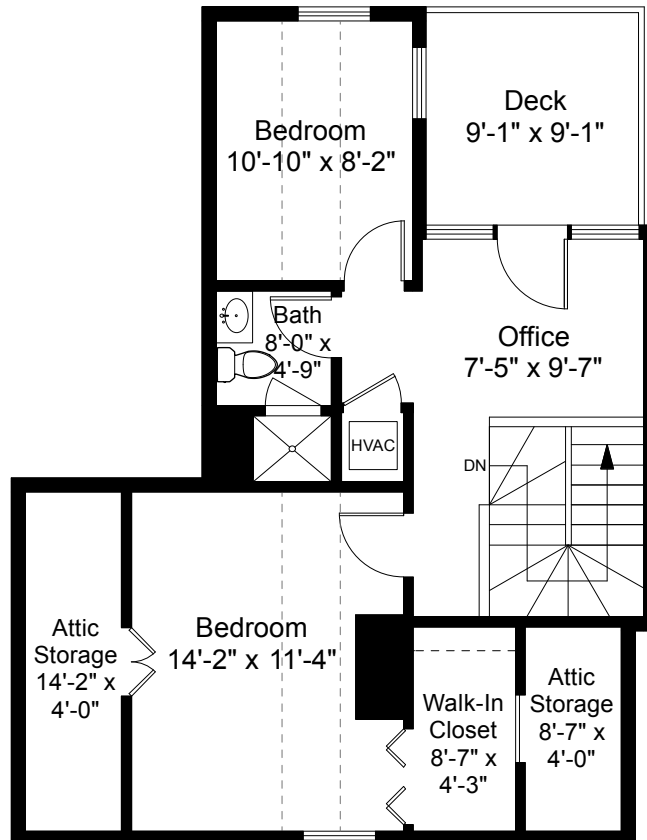
2



Completed: April 2017

Note: Dimensions are not guaranteed and are provided for informational purposes only. Individual room dimensions are not used to calculate overall square footage.

NATIONAL
—FLOOR PLANS—
& PHOTOGRAPHY
(800) 328-0217



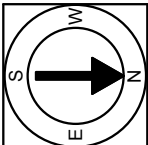
Third Floor Plan
Ceiling Height = 10'-0"

1564 Massachusetts Avenue
Cambridge, MA 02138



Scale 1/8" = 1'-0"

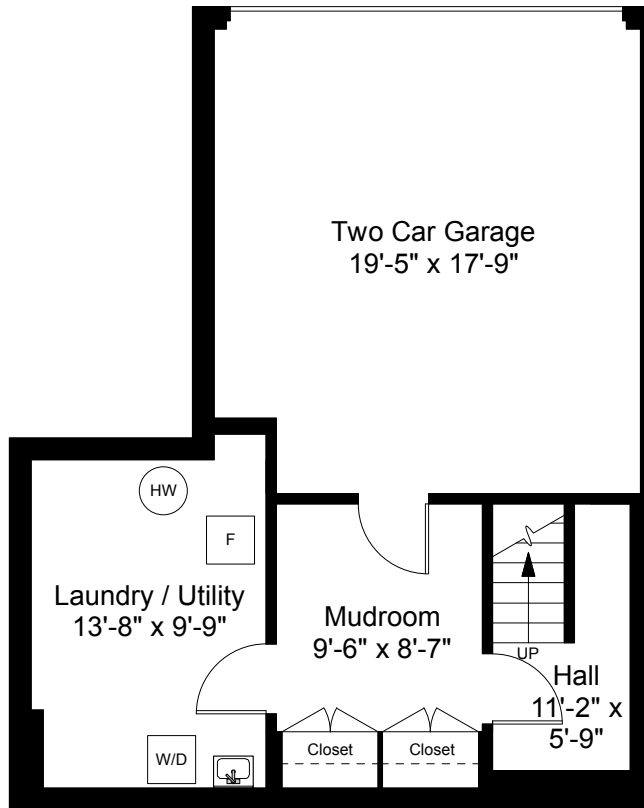
3



Completed: April 2017

Note: Dimensions are not guaranteed and are provided for informational purposes only. Individual room dimensions are not used to calculate overall square footage.

NATIONAL
—FLOOR PLANS—
& PHOTOGRAPHY
(800) 328-0217



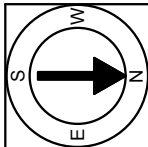
Lower Level Plan
Ceiling Height = 8'-6"

1564 Massachusetts Avenue
Cambridge, MA 02138



Scale 1/8" = 1'-0"

4



Completed: April 2017

Note: Dimensions are not guaranteed and are provided for informational purposes only. Individual room dimensions are not used to calculate overall square footage.

NATIONAL
—FLOOR PLANS—
& PHOTOGRAPHY
(800) 328-0217