

JOHN F. ZAMBORELLI, ET AL

JAMES C. DI MUNZIO
MILDRED M. DI MUNZIO

1 STY. WD. GAR.

165.05'

S 71° 28' 11" E

4 STORY BRICK BLDG.

5 STORY BRICK BLDG.
NO. 10 DANA ST.

AREA = 24,310 SQ. FT.

4 STORY BRICK BLDG.
FIRST FLOOR ELEV. = 69.76

CENTRE

(50' WIDE - PUBLIC)

STREET

FOR REGISTRY USE ONLY

Middlesex Registry of Deeds, So. Dist.
CAMBRIDGE, MASS.

Plan Number 065(4057) of 1979
Rec'd SEPT 14 1979 at 1:58 PM
With NOT. D.L. COMM. DOC. No. 218
PHILIP P. STUART, ET AL, TRS.

Recorded, Book 13788 Page 640

Attest: John F. Zamborelli
Register

FEB 27 1980

BY Nh

NOTE

1. ELEVATION ON CITY OF CAMBRIDGE DATUM.
2. BEARINGS SHOWN ON ASSUMED SYSTEM.

DEED REFERENCES

MIDDLESEX REGISTRY OF DEEDS.
BOOK 8197, PAGE 34

PLAN REFERENCES

L.C.C. 6107 B
L.C.C. 6516 A
PLAN BOOK 181, PLAN 4

THIS IS TO CERTIFY THAT ACCORDING
TO HUD-FIA FLOOD BOUNDARY MAP
H-01-03 MAP 03 FOR CAMBRIDGE DATED
11/19/76, THIS SITE DOES NOT LIE
WITHIN A SPECIAL FLOOD HAZARD AREA.

Wendell H. Mason



I CERTIFY THAT THIS PLAN OF 10 DANA ST.
CONDOMINIUM SHOWS THE UNIT BEING CONVEYED,
AND THAT IT FULLY AND ACCURATELY DEPICTS
THE LAYOUT OF THE UNIT WITH RESPECT TO
THE BOUNDARY LINES, DIMENSIONS AND
IMMEDIATE COMMON AREA TO WHICH IT HAS
ACCESS AS BUILT.
I FURTHER CERTIFY THAT THIS PLAN
CONFORMS WITH THE RULES AND REGULATIONS
OF THE REGISTER OF DEEDS.

Wendell H. Mason



PLAN OF CONDOMINIUM
NO. 10 DANA ST.
CAMBRIDGE, MASS.

SCALE: 1" = 10'

AUG. 20, 1979

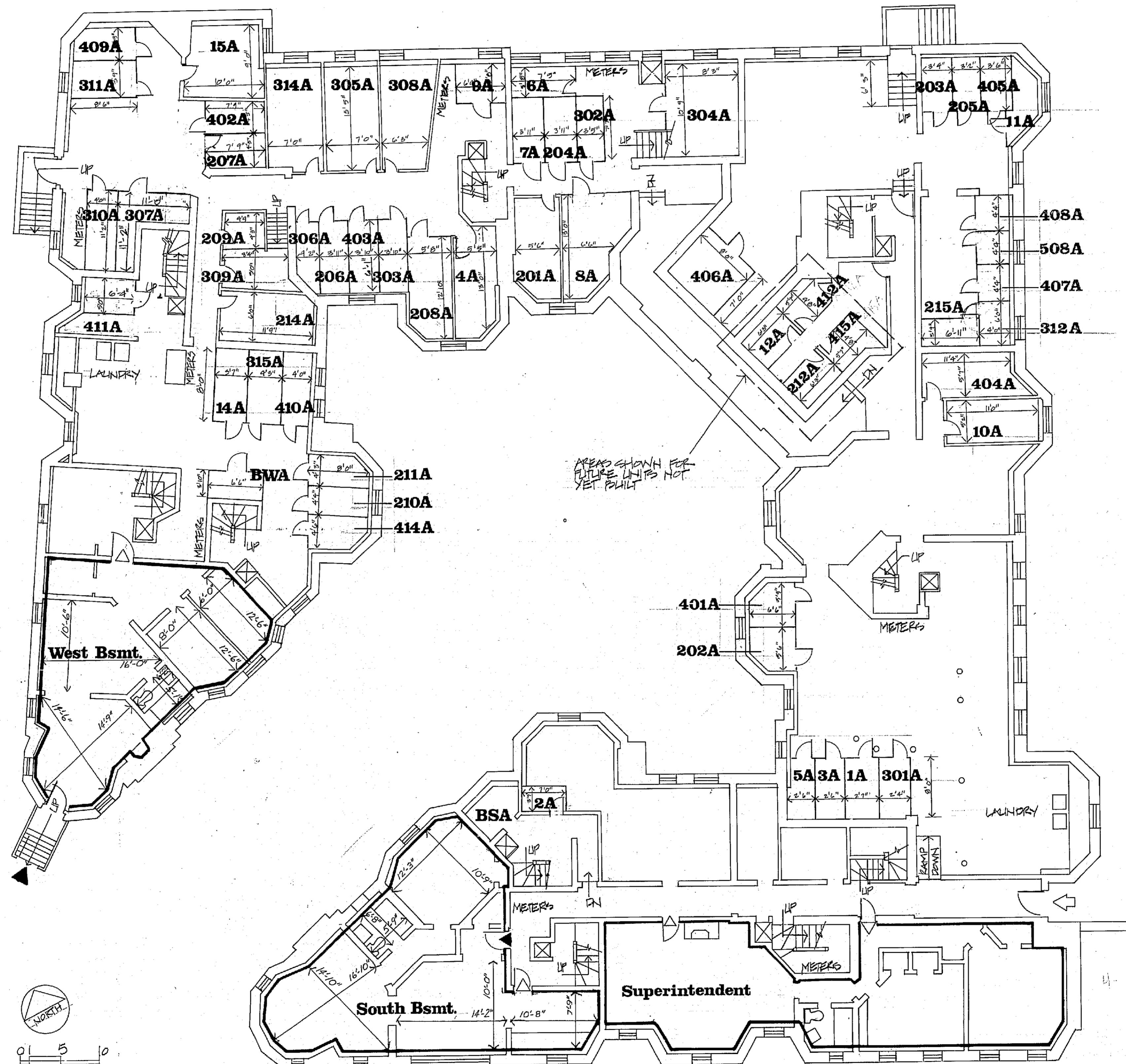
HARRY R. FELDMAN, INC.

LAND SURVEYORS

112 SHAWMUT AVE.

BOSTON, MASS.

PLAN NUMBER 065(4057) OF 1979
RECORDED, BOOK 13788 PAGE 640



I certify that this plan has been prepared in conformity with the rules and regulations of the Registers of Deeds, Commonwealth of Massachusetts, as built.

I certify that this plan fully and accurately depicts the layout, location, unit, number and dimensions of the units numbered 1 thru 12, 14, 15 on first floor, 201-212, 214, 215 on second floor, 301-312, 314, 315 on third floor, 401-412, 414, 415 on fourth floor, 406, 407, 409, 508 on fifth floor, south basement unit, and west basement unit on basement floor plan in the condominium at 10 Dana Street, Cambridge, Massachusetts, as built.

PLAN NUMBER 1065(B-F7) OF 1979
RECORDED, BOOK 13788, PAGE 640

10 DANA ST. CONDOMINIUM

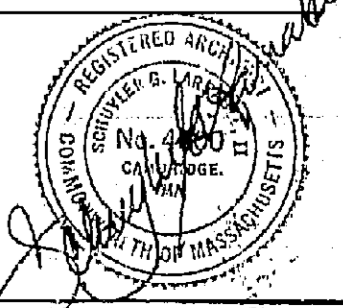
10 DANA STREET, CAMBRIDGE, MA. 02138

ADD Inc Architecture Design Development
1158 Massachusetts Avenue
Cambridge Massachusetts 02138

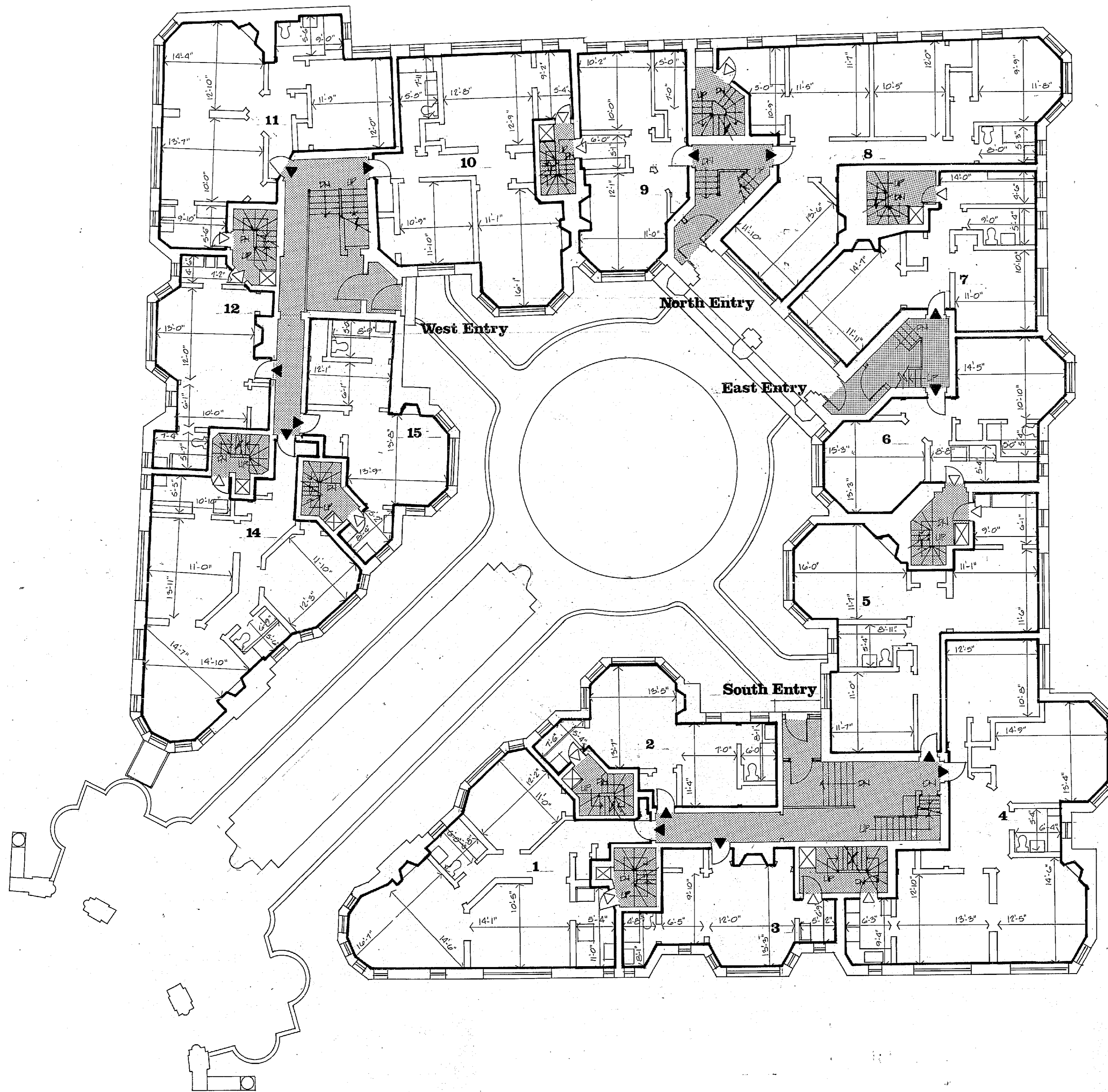
Date: 6 SEP 1979
Revisions:

Job No. 111
Drawn By: JEA
Scale: 1/8" = 1'-0"

BASEMENT



1
Sheet 1 of 6



I certify that this plan has been prepared in conformity with the rules and regulations of the Registers of Deeds, Commonwealth of Massachusetts, as built.

I certify that this plan fully and accurately depicts the layout, location, unit, number and dimensions of the units numbered 1 thru 12, 14, 15 on first floor, 201-212, 214, 215 on second floor, 301-312, 314, 315 on third floor, 401-412, 414, 415 on fourth floor, 406, 407, 408, 508 on fifth floor, south basement unit, and west basement unit on basement floor plan in the condominium at 10 Dana Street, Cambridge, Massachusetts, as built.

PLAN NUMBER 10651 (of 7) 04/979
RECORDED BOOK 13283 PAGE 610

10 DANA ST. CONDOMINIUM

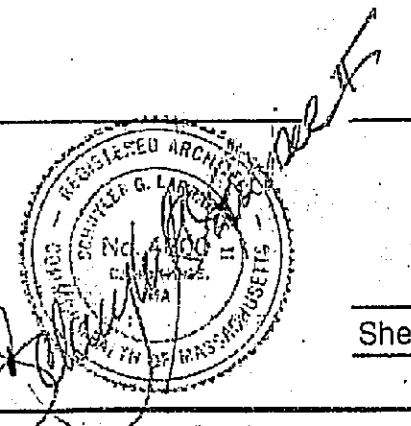
10 DANA STREET, CAMBRIDGE, MA. 02138

ADD Inc Architecture Design Development
1158 Massachusetts Avenue
Cambridge Massachusetts 02138

Date 6 SEP 1997
Revisions

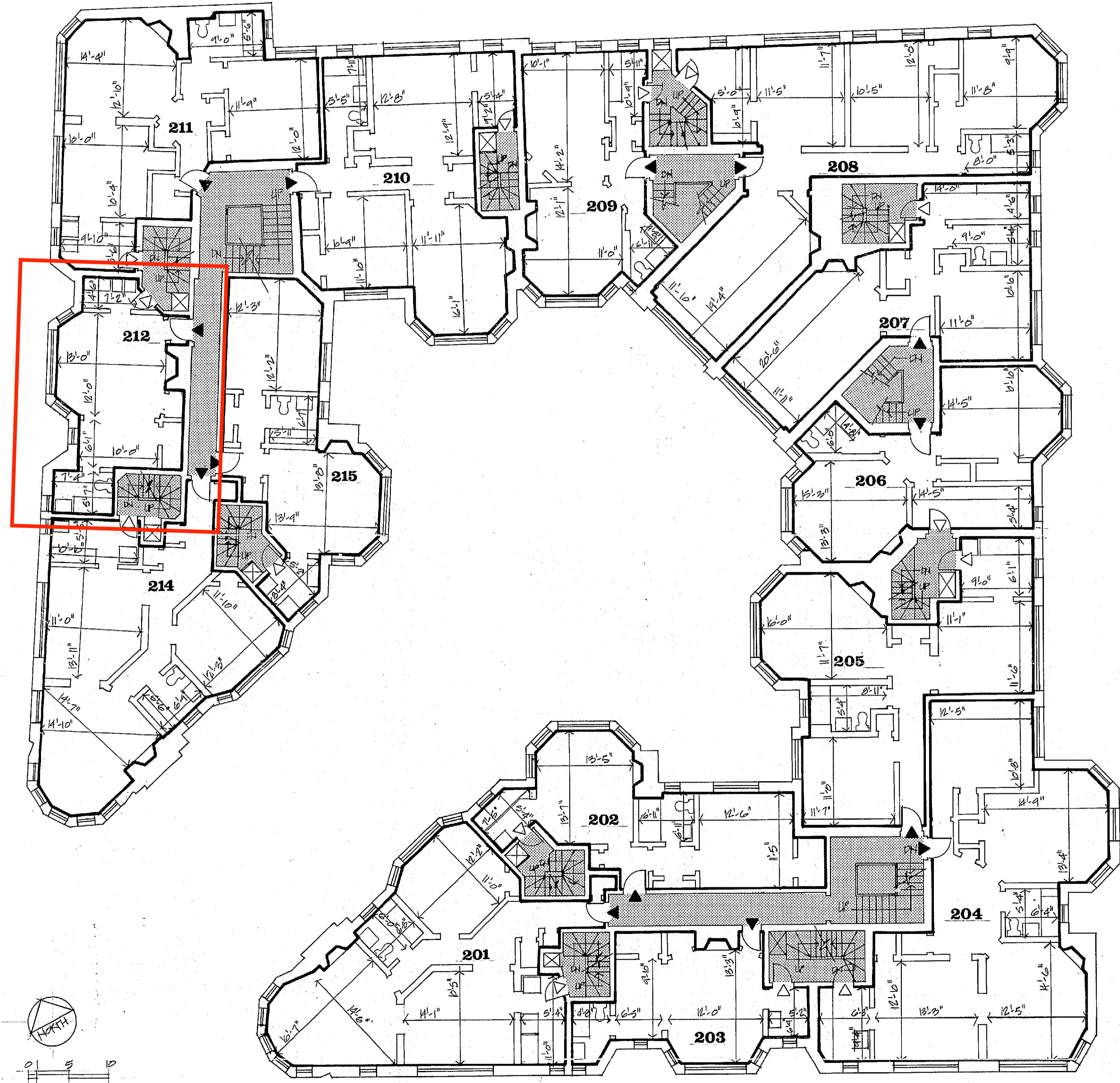
Job No. 1931
Drawn By JLS
Scale 1/4" = 1'-0"

FIRST FLOOR



2

Sheet 2 of 6



PLAN NUMBER 1265 (2 of 7) OF 1989
 RECORDED, BOOK 3788, PAGE 270

I certify that this plan has been prepared in conformity with the rules and regulations of the Registers of Deeds, Commonwealth of Massachusetts, as built.

I certify that this plan fully and accurately depicts the layout, location, unit, number and dimensions of the units numbered 1 thru 12, 14, 15 on first floor, 201-212, 214, 215 on second floor, 301-312, 314, 315 on third floor, 401-412, 414, 415 on fourth floor, 406, 407, 409, 508 on fifth floor, south basement unit, and west basement unit on basement floor plan in the condominium at 10 Dana Street, Cambridge, Massachusetts, as built.

10 DANA ST. CONDOMINIUM

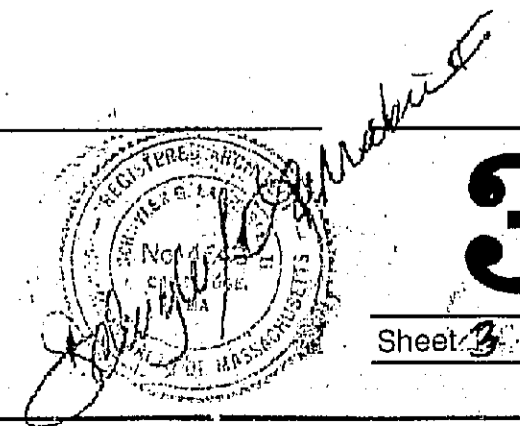
10 DANA STREET, CAMBRIDGE, MA. 02138

ADD Inc Architecture Design Development
 1158 Massachusetts Avenue
 Cambridge Massachusetts 02138

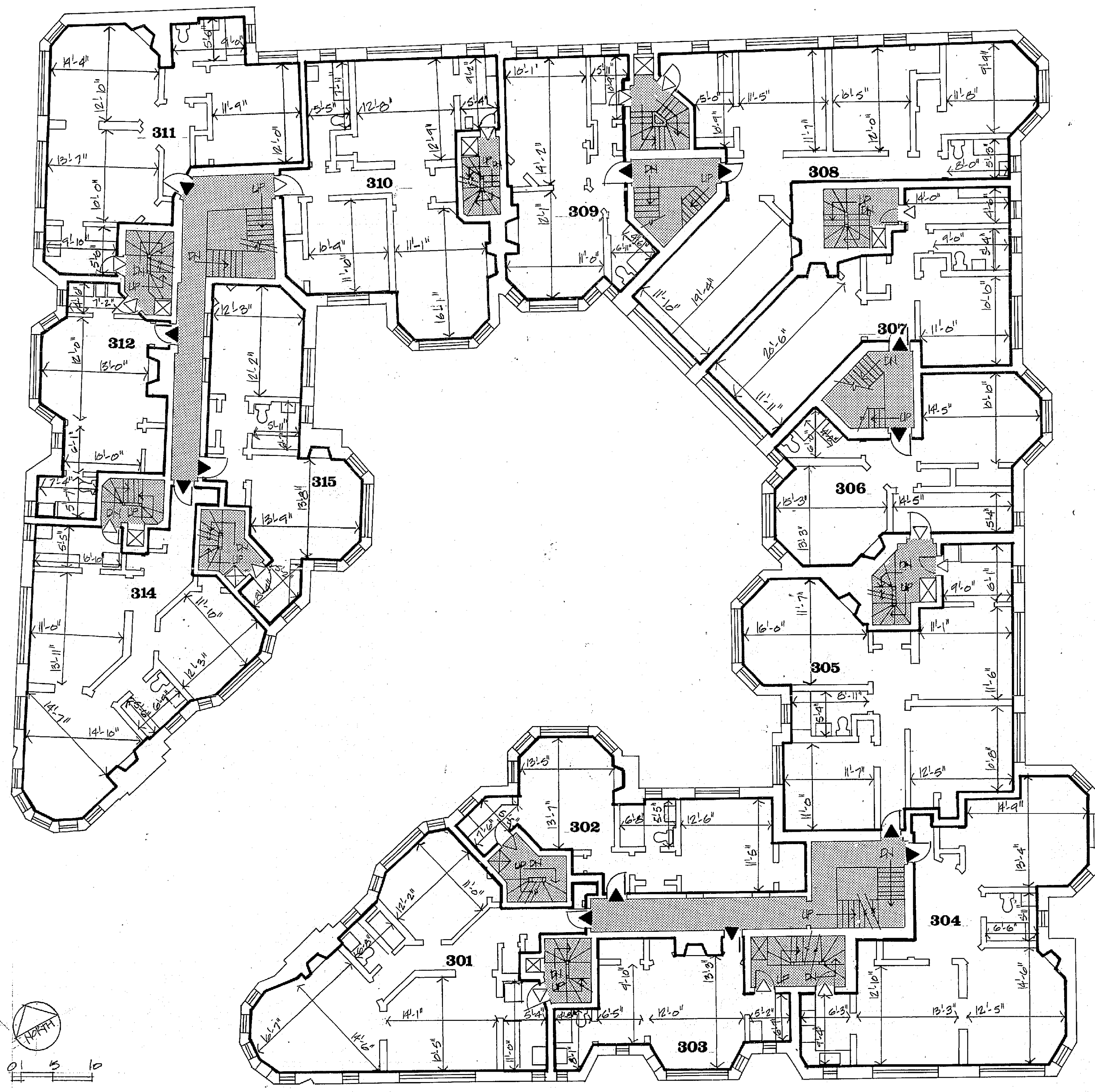
Date: 6/20/1989
 Revisions:

Job No. 1265
 Drawn By: [Signature]
 Scale: 1/8" = 1'-0"

SECOND FLOOR



3
 Sheet 3 of 6



I certify that this plan has been prepared in conformity with the rules and regulations of the Registers of Deeds, Commonwealth of Massachusetts, as built.

I certify that this plan fully and accurately depicts the layout, location, unit, number and dimensions of the units numbered 1 thru 12, 14, 15 on first floor, 201-212, 214, 215 on second floor, 301-312, 314, 315 on third floor, 401-412, 414, 415 on fourth floor, 406, 407, 408, 508 on fifth floor, south basement unit, and west basement unit on basement floor plan in the condominium at 10 Dana Street, Cambridge, Massachusetts, as built.

PLAN NUMBER 10651 (E of J) 01/9779
 RECORDED BOOK 3788 PAGE 670

10 DANA ST. CONDOMINIUM

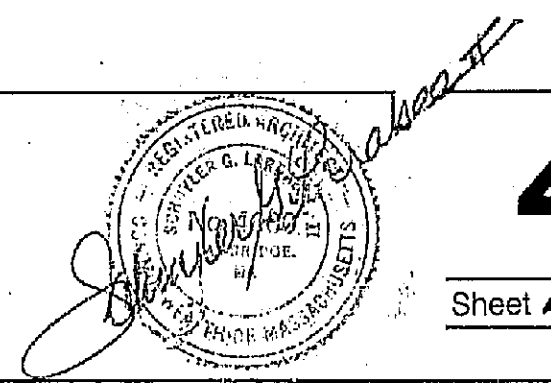
10 DANA STREET, CAMBRIDGE, MA. 02138

ADD Inc Architecture Design Development
 1158 Massachusetts Avenue
 Cambridge Massachusetts 02138

Date: 6 SEP 1979
 Revisions:

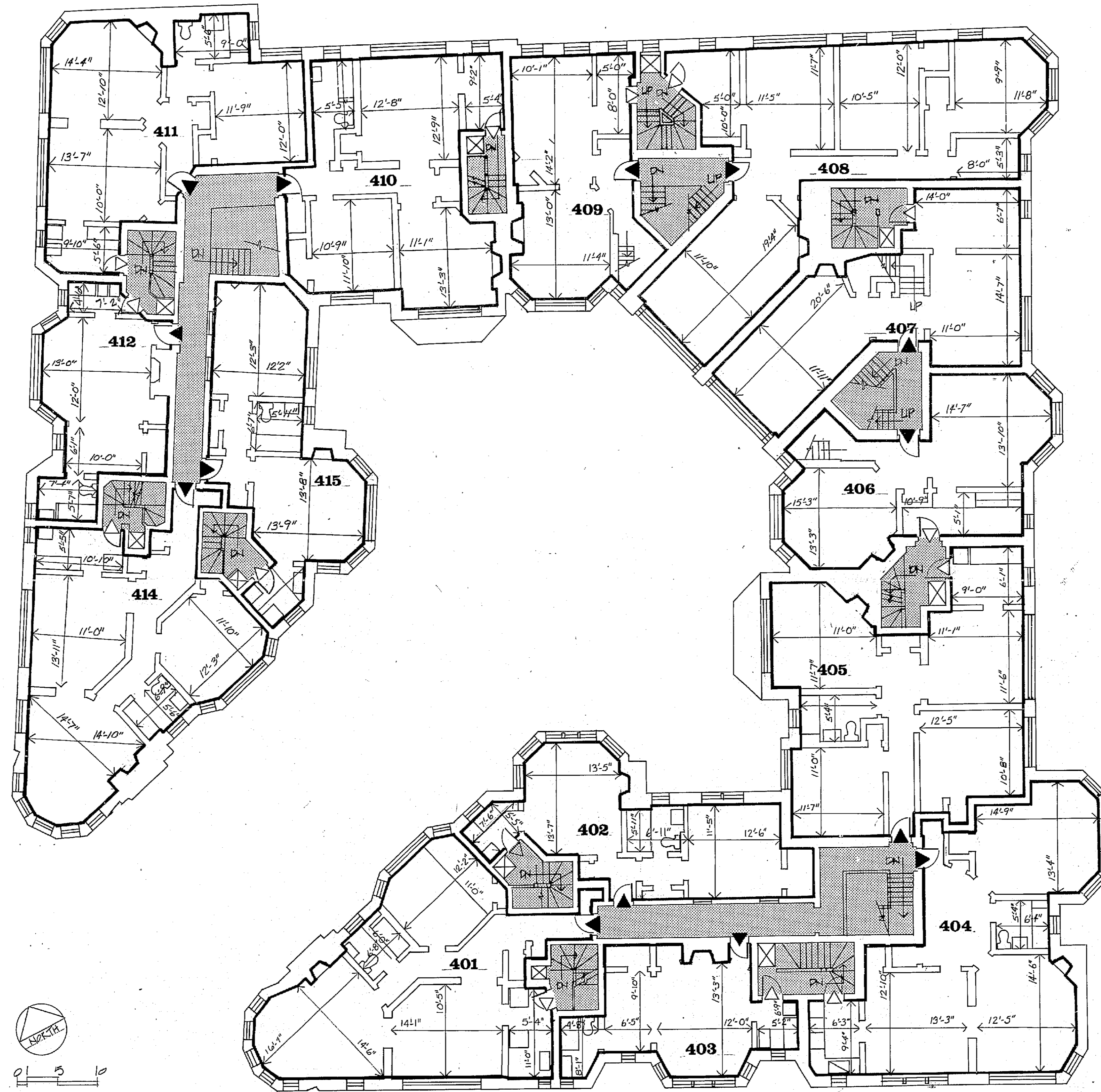
Job No. 72111
 Drawn By: [Signature]
 Scale: 1/8" = 1'-0"

THIRD FLOOR



4

Sheet 4 of 6



I certify that this plan has been prepared in conformity with the rules and regulations of the Registers of Deeds, Commonwealth of Massachusetts, as built.

I certify that this plan fully and accurately depicts the layout, location, unit, number and dimensions of the units numbered 1 thru 12, 14, 15 on first floor, 201-212, 214, 215 on second floor, 301-312, 314, 315 on third floor, 401-412, 414, 415 on fourth floor, 406, 407, 409, 508 on fifth floor, south basement unit, and west basement unit on basement floor plan in the condominium at 10 Dana Street, Cambridge, Massachusetts, as built.

PLAN NUMBER 1045 (of 7) DT 1979
RECORDED, BOOK 3788 PAGE 640

10 DANA ST. CONDOMINIUM

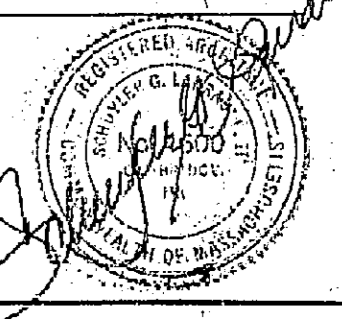
10 DANA STREET, CAMBRIDGE, MA. 02138

ADD Inc Architecture Design Development
1158 Massachusetts Avenue
Cambridge Massachusetts 02138

Date: 6 SEPTEMBER 79
Revisions:

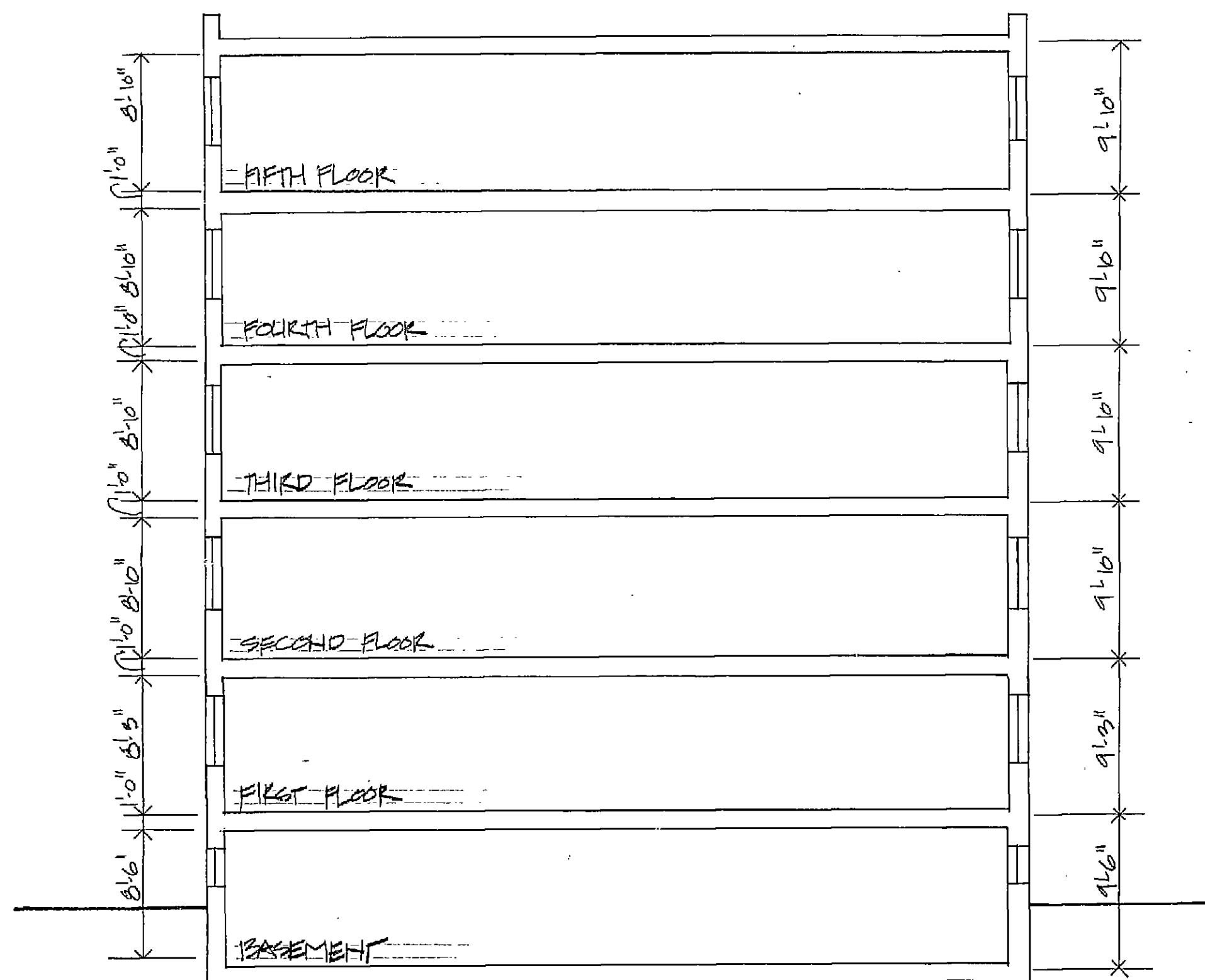
Job No. 1131
Drawn By: ATG
Scale: 1/8" = 1'-0"

FOURTH FLOOR

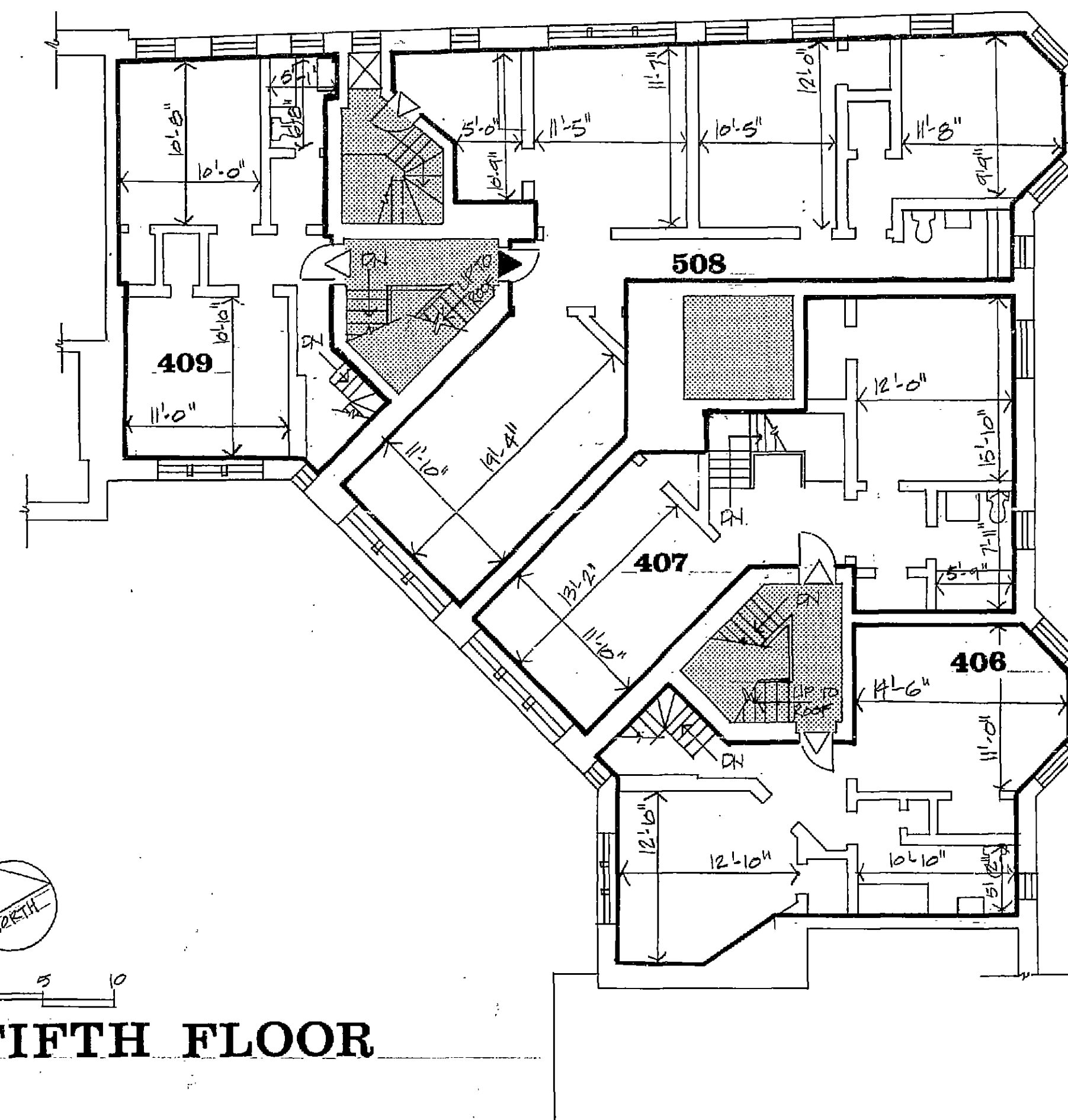


5

Sheet 5 of 6



SECTION



FIFTH FLOOR

I certify that this plan has been prepared in conformity with the rules and regulations of the Registers of Deeds, Commonwealth of Massachusetts, as built.

I certify that this plan fully and accurately depicts the layout, location, unit, number and dimensions of the units numbered 1 thru 13, 14, 15 on first floor, 201-212, 214, 215 on second floor, 301-312, 314, 315 on third floor, 401-412, 414, 415 on fourth floor, 406, 407, 409, 508 on fifth floor, south basement unit, and west basement unit on basement floor plan in the condominium at 10 Dana Street, Cambridge, Massachusetts, as built.

PLAN NUMBER 1265 (5 of 2) OF 1979
RECORDED, BOOK 13788, PAGE 270

10 DANA ST. CONDOMINIUM

10 DANA STREET, CAMBRIDGE, MA. 02138

ADD Inc Architecture Design Development
1158 Massachusetts Avenue
Cambridge Massachusetts 02138

Date: SEPTEMBER 79
Revisions:

Job No. 7931
Drawn By AT
Scale 1/8" = 1'-0"

FIFTH FLOOR SECTION

