

FENWICK STREET

HEATH STREET
(PUBLIC 45' WIDE)

One Foot bump out fences

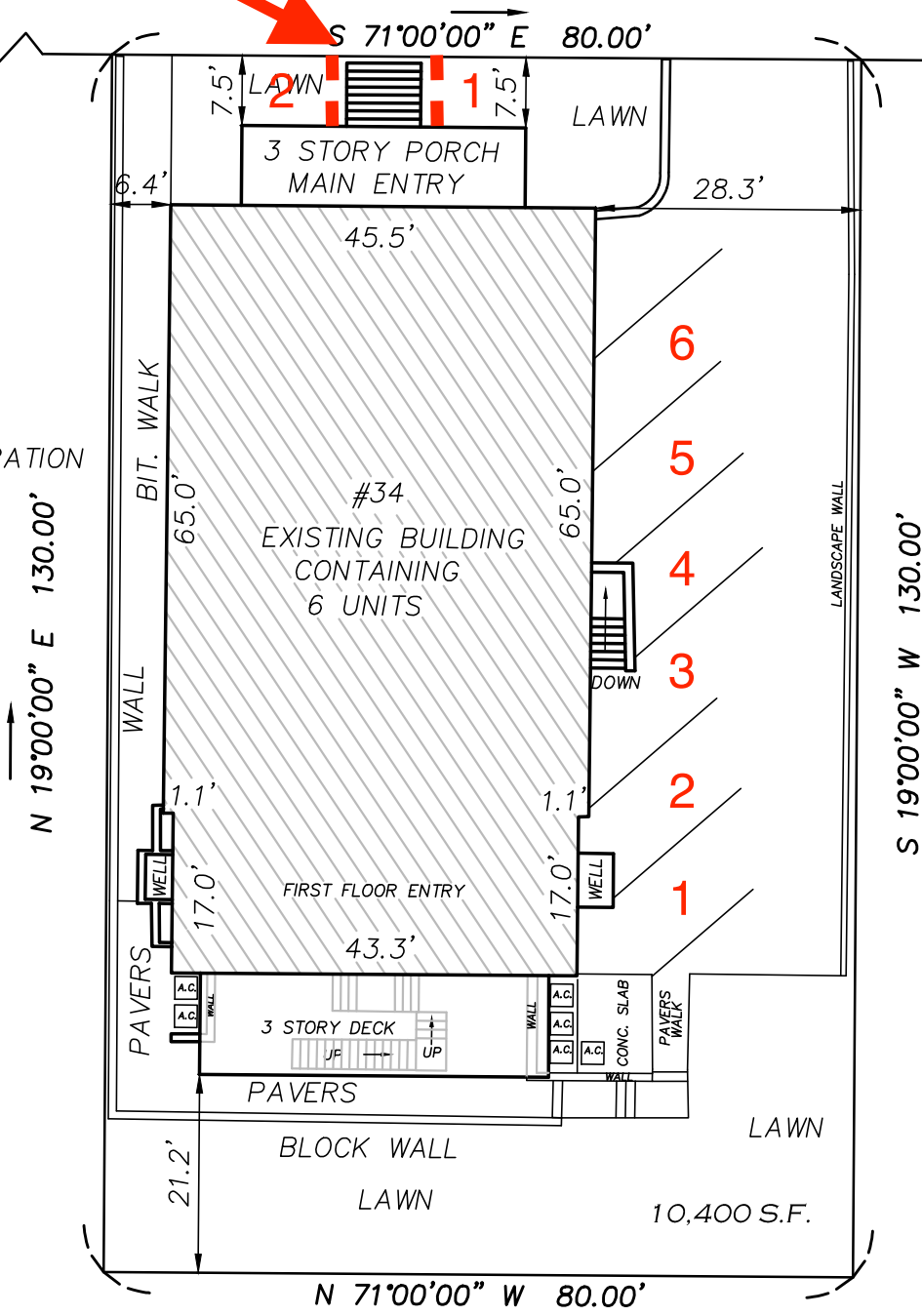
S 71°00'00" E 190.00'

SB/CENTER HELD

LANGMAID AVENUE

N/F KLT CORPORATION

N/F JOHN MARTINS JR.



N/F KLT CORPORATION

I HEREBY CERTIFY:

THAT ACCORDING TO DEEDS AND PLANS OF RECORD THE PROPERTY LINES SHOWN ON THIS PLAN ARE THE LINES DIVIDING EXISTING OWNERSHIP, AND THE LINES OF STREETS AND WAYS SHOWN ARE THOSE OF PUBLIC OR PRIVATE STREETS OR WAYS ALREADY ESTABLISHED AND THAT NO NEW LINES FOR THE DIVISION OF EXISTING OWNERSHIP OR FOR NEW STREETS AND WAYS ARE SHOWN.

THAT THIS PLAN WAS PREPARED IN ACCORDANCE WITH THE RULES AND REGULATIONS OF THE REGISTERS OF DEEDS, DATED JANUARY 1, 1976 AND REVISED JANUARY 12, 1988.

THAT THIS PLAN FULLY AND ACCURATELY DEPICTS THE LOCATION AND DIMENSIONS OF THE BUILDING, AS BUILT AND FULLY LISTS THE UNITS CONTAINED THEREIN.

EDWARD J. FARRELL PLS



**SITE PLAN
34 HEATH STREET
CONDOMINIUM
SOMERVILLE, MASS.**

SCALE: 1" = 8' JUNE 25, 2021

PREPARED BY

EDWARD J. FARRELL

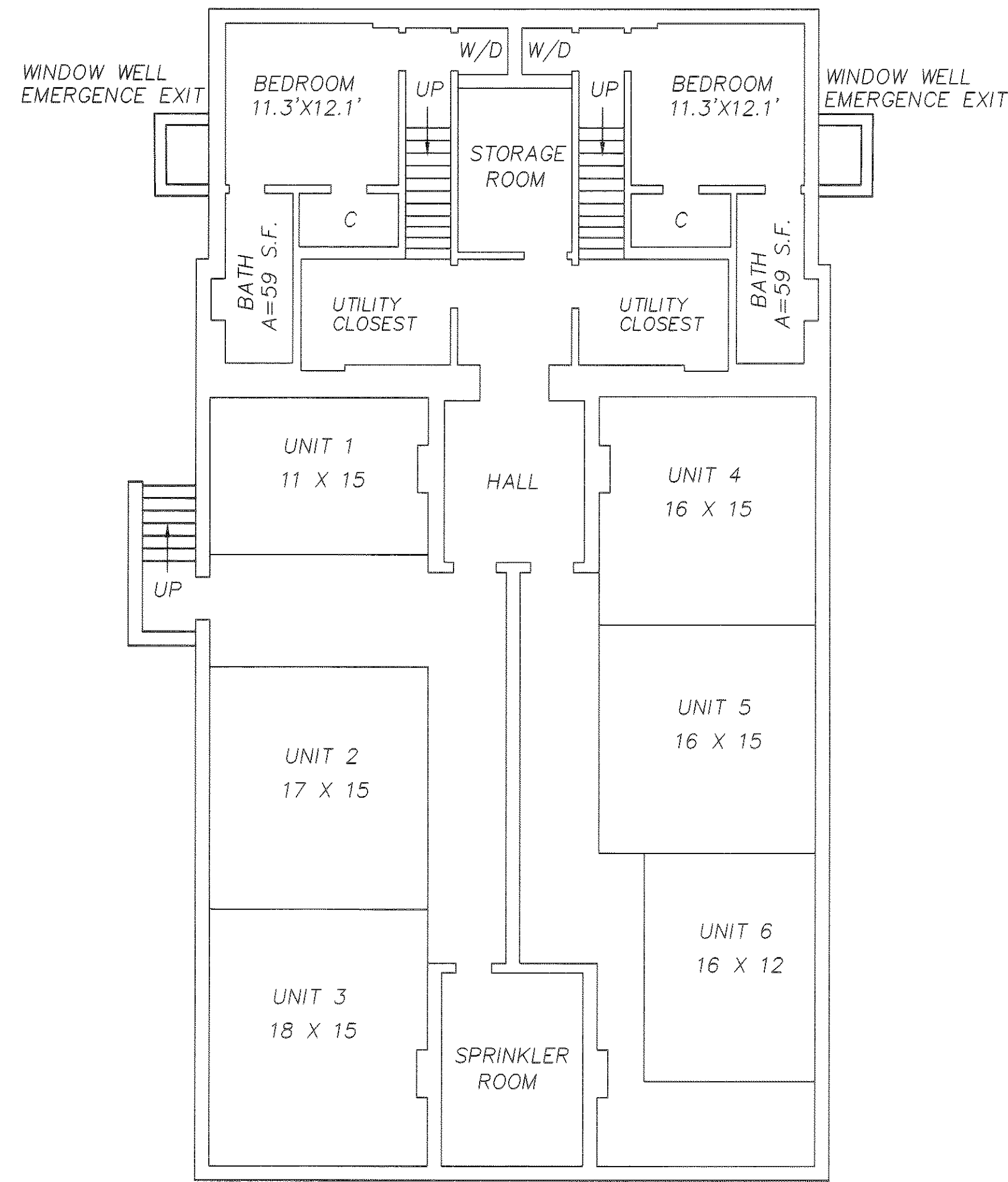
PROFESSIONAL LAND SURVEYOR

110 WINN STREET ~ SUITE 203 ~ WOBURN, MASS.

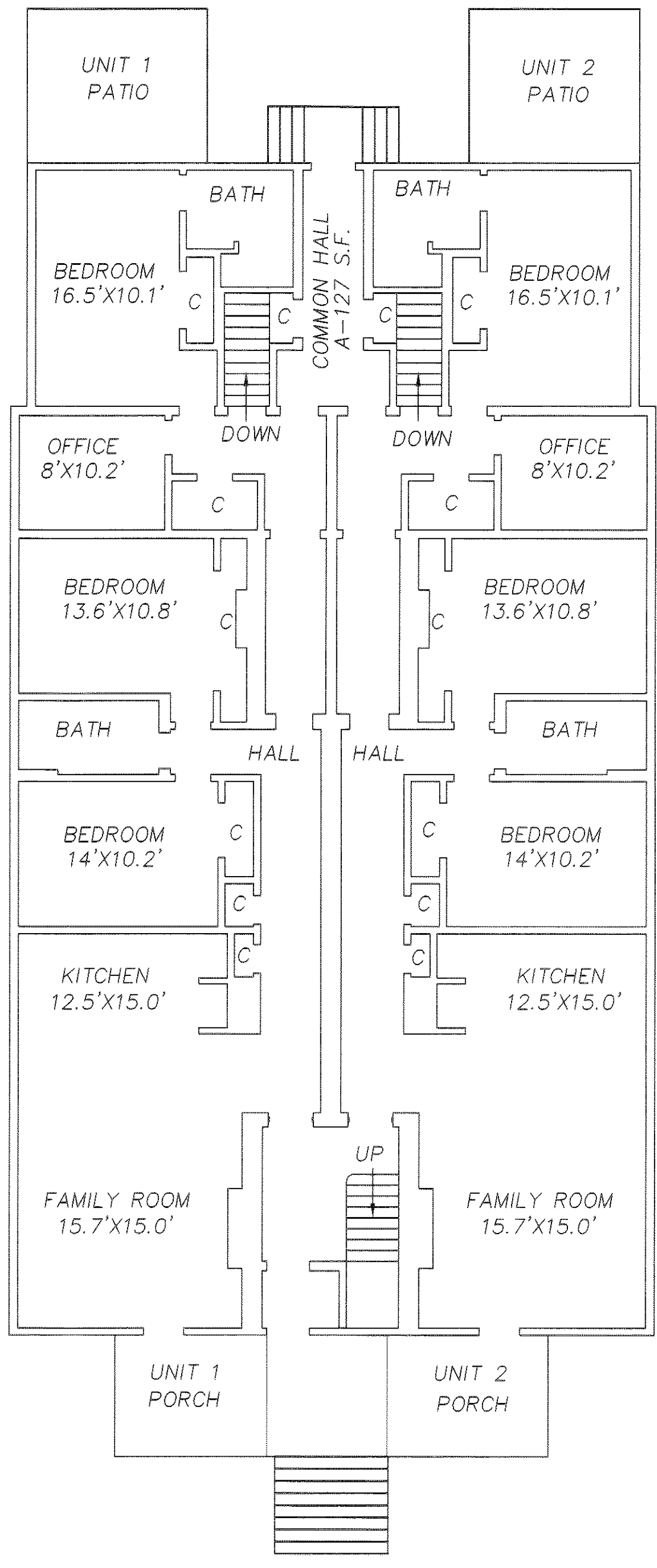
(781) 933-9012

UNIT 1 BASEMENT
AREA=320 S.F.

UNIT 2 BASEMENT
AREA=320 S.F.

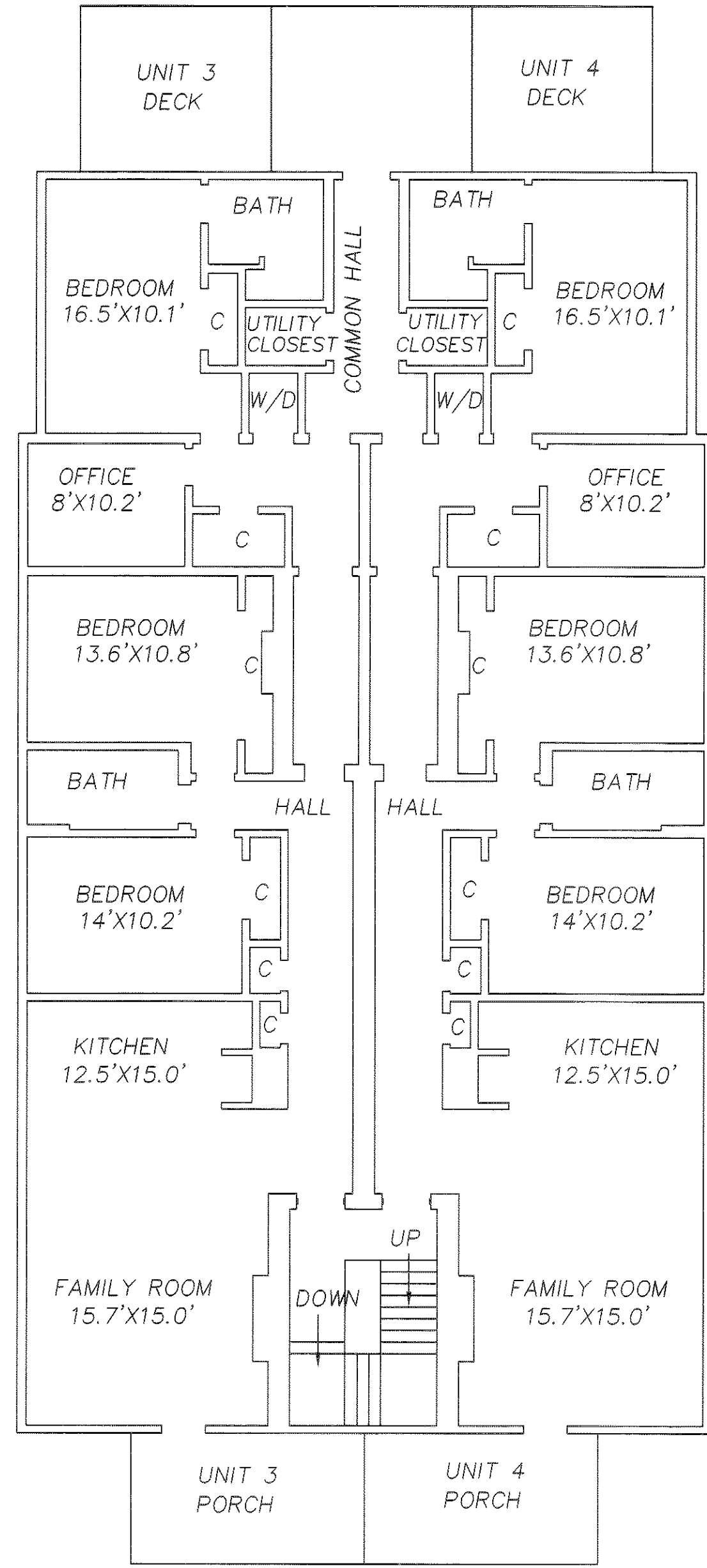


BASEMENT
AREA=2,518 S.F.



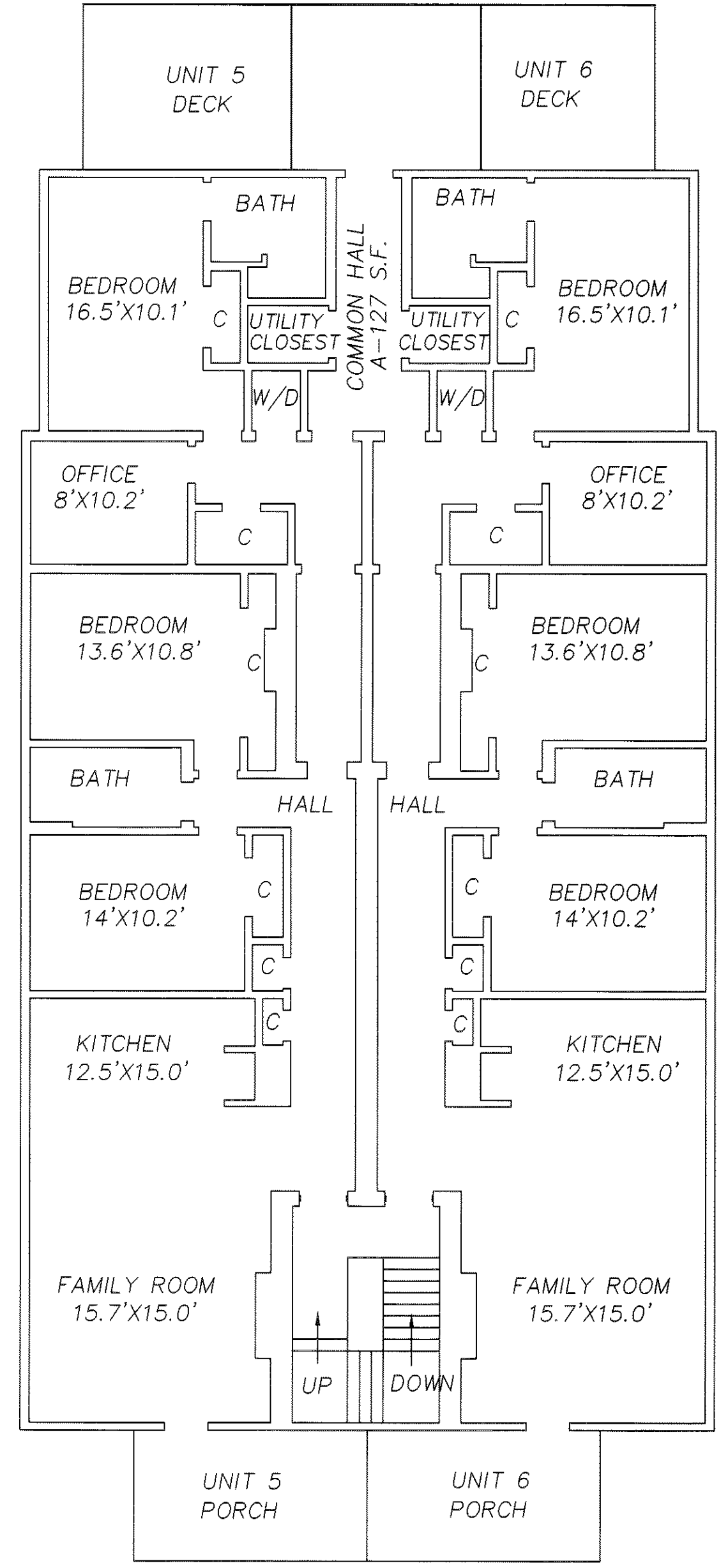
UNIT 1 FIRST FLOOR
AREA=1,675 S.F.
TOTAL AREA=1,995 S.F.

UNIT 2 FIRST FLOOR
AREA=1,675 S.F.
TOTAL AREA=1,995 S.F.



UNIT 3 SECOND FLOOR
AREA=1,710 S.F.

UNIT 4 SECOND FLOOR
AREA=1,710 S.F.



UNIT 5 THIRD FLOOR
AREA=1,710 S.F.

UNIT 6 THIRD FLOOR
AREA=1,710 S.F.

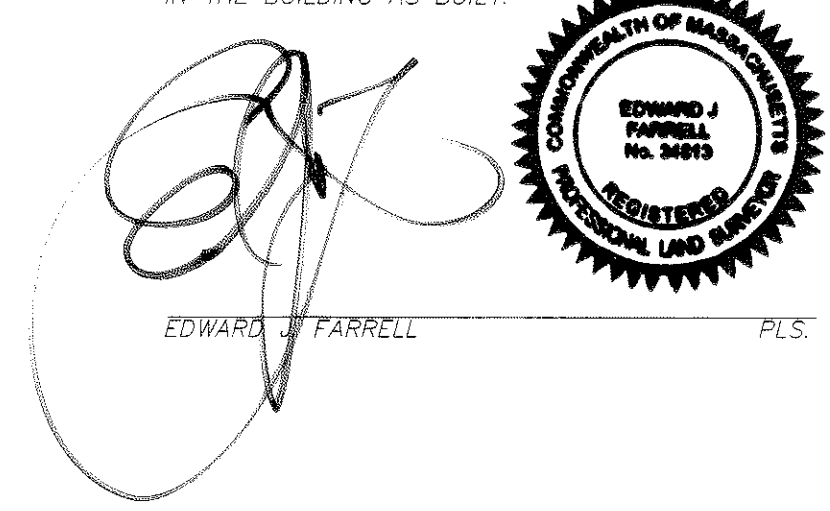
PLAN NO. 550 OF 2021
SHEET 2 OF 2



I HEREBY CERTIFY THAT:

THIS PLAN WAS PREPARED IN ACCORDANCE WITH THE RULES AND REGULATIONS OF THE REGISTERS OF DEEDS DATED JANUARY 1, 1976 AND REVISED JANUARY 12, 1988.

THIS PLAN FULLY AND ACCURATELY DEPICTS THE LAYOUT, LOCATION, UNIT NUMBER AND DIMENSIONS OF THE UNITS IN THE BUILDING AS BUILT.



FLOOR PLANS
34 HEATH STREET
CONDOMINIUM
SOMERVILLE, MASS.
SCALE: 1" = 8' JUNE 25, 2021
PREPARED BY
EDWARD J. FARRELL
PROFESSIONAL LAND SURVEYOR
110 WINN STREET ~ SUITE 203 ~ WOBURN, MASS.
(781) 933-9012