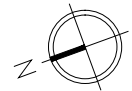


- NOTES:**
1. Window Sill Heights are 2'-1 1/2"± unless otherwise noted on plan.
 2. Window Head Heights are 7'-4 1/2"± unless otherwise noted on plan.
 3. Ceiling heights are 8'-11"± unless otherwise noted on plan.

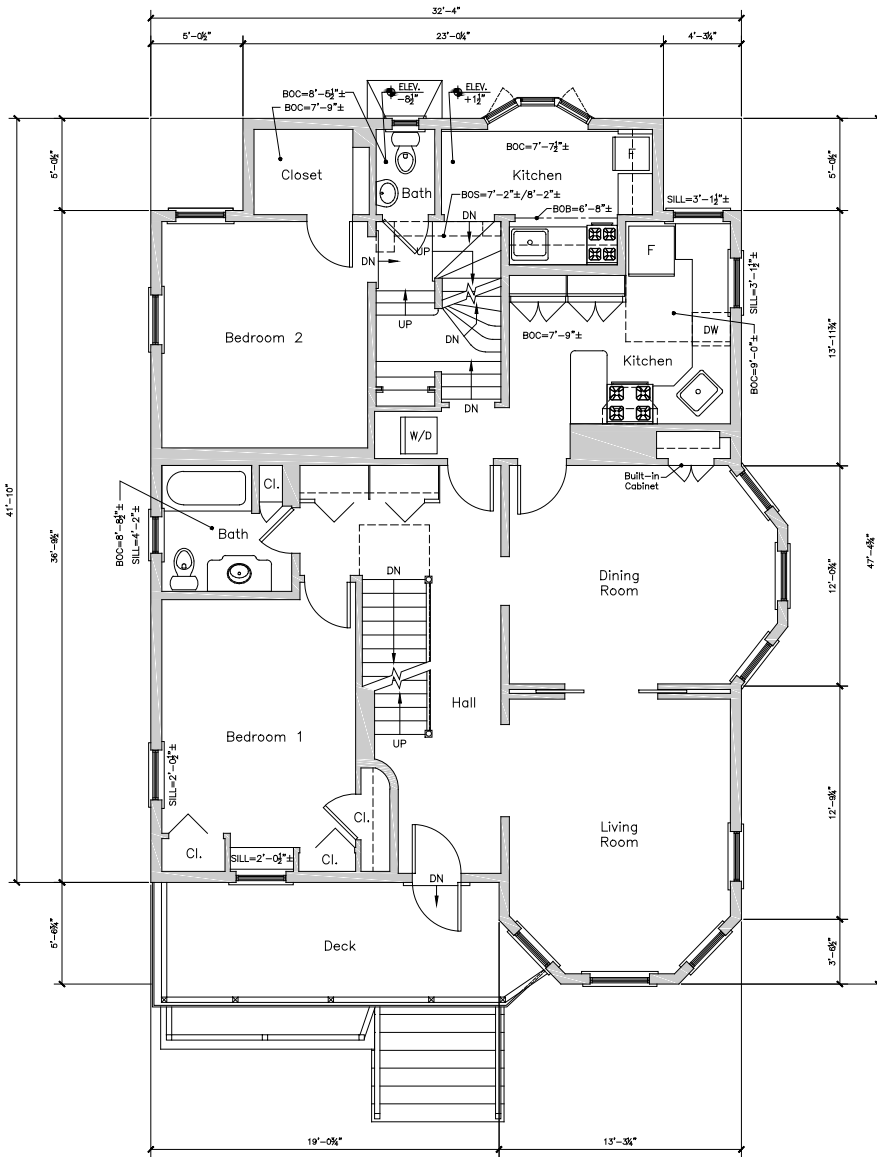
- FLOOR-TO-FLOOR HEIGHTS:**
1. First Floor to Basement = 7'-8 1/2"±
 2. First Floor to Second Floor = 9'-11"±

CEILING HEIGHT KEY

BOC	= Bottom of Ceiling
BOB	= Bottom of Beam
BOS	= Bottom of Soffit



(A) First Floor Plan



NOTES:

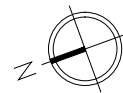
1. Window Sill Heights are 2'-1 1/2"± unless otherwise noted on plan.
2. Window Head Heights are 7'-5"± unless otherwise noted on plan.
3. Ceiling heights are 9'-0"± unless otherwise noted on plan.

FLOOR-TO-FLOOR HEIGHTS:

1. Second Floor to First Floor = 9'-11"±
2. Second Floor to Third Floor = 9'-11"±

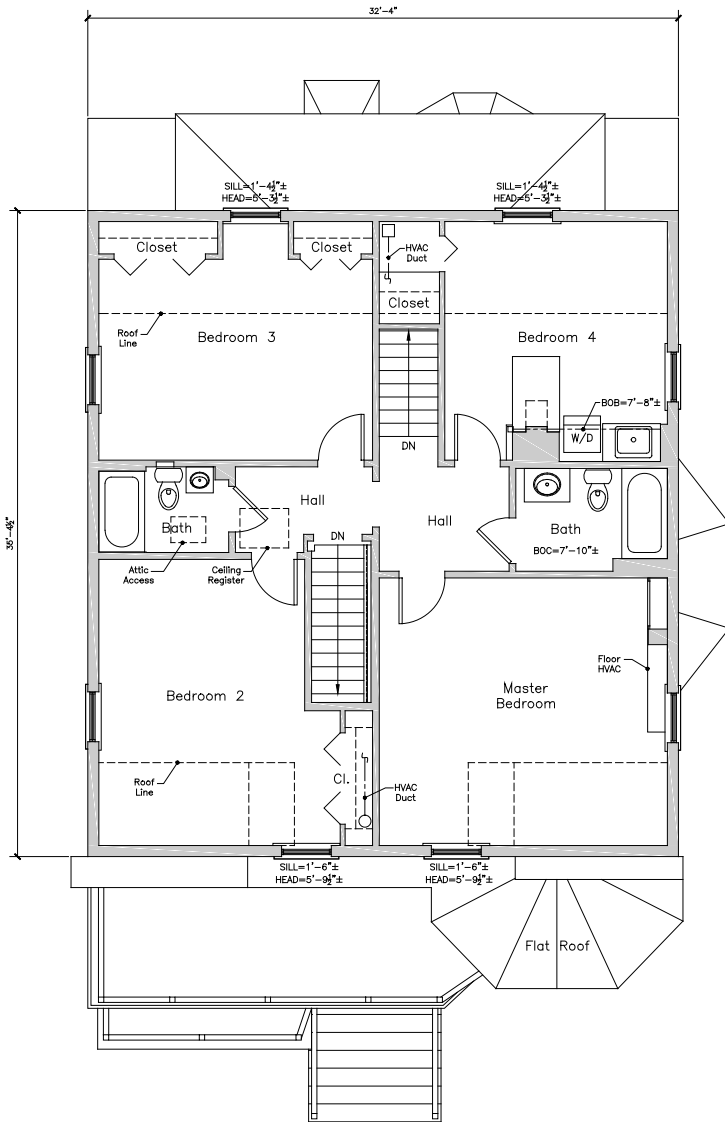
CEILING HEIGHT KEY:

BOC = Bottom of Ceiling
 BOB = Bottom of Beam
 BOS = Bottom of Soffit



B Second Floor Plan

60 Highland Avenue, Cambridge, MA

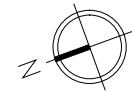


- NOTES:**
1. Window Sill Heights are 2'-1 1/2"± unless otherwise noted on plan.
 2. Window Head Heights are 6'-4 3/4"± unless otherwise noted on plan.
 3. Ceiling heights are 8'-3"± unless otherwise noted on plan.

- FLOOR-TO-FLOOR HEIGHTS:**
1. Third Floor to Second Floor = 9'-11"±

CEILING HEIGHT KEY

BOC	=	Bottom of Ceiling
BOB	=	Bottom of Beam
BOS	=	Bottom of Soffit



© Third Floor Plan