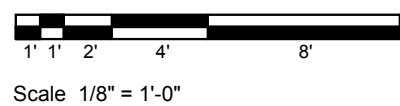
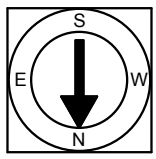


**First Floor Plan**  
Ceiling Height = 8'-6"

8 Vineyard Street  
Cambridge, MA 02138

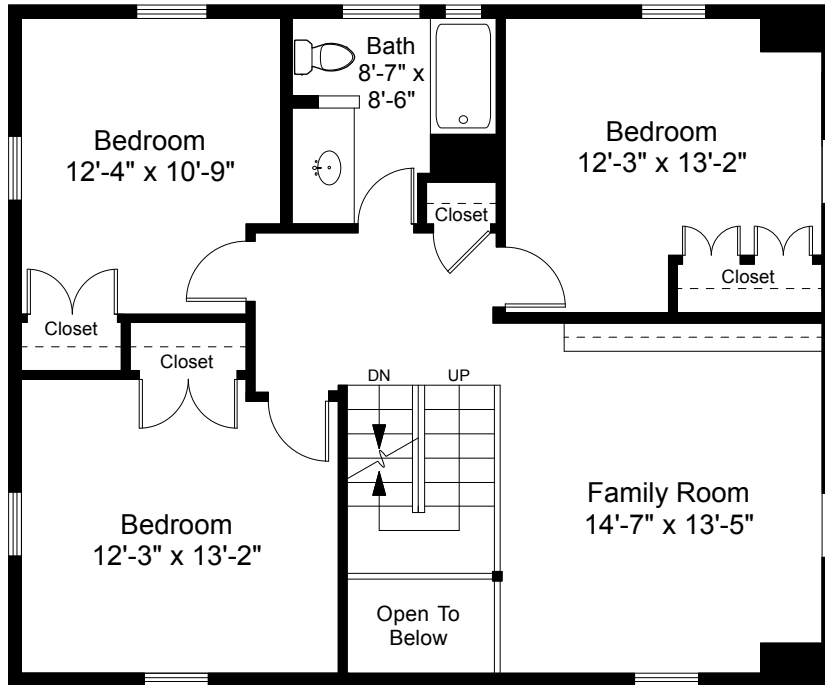


1

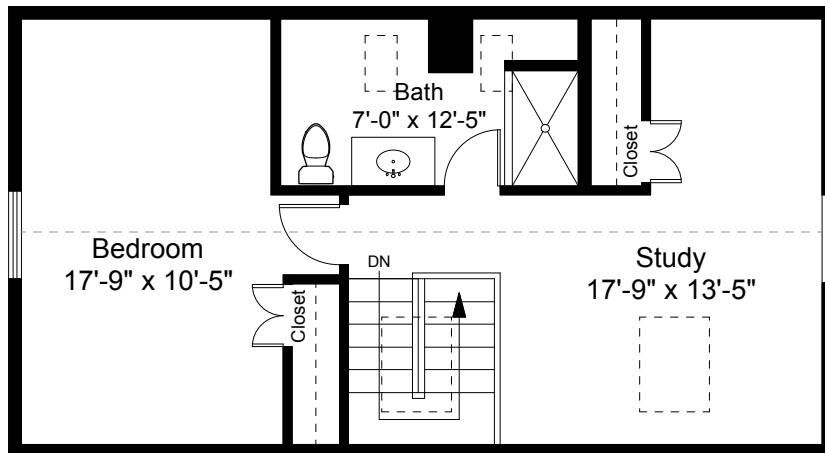


Completed: July 2017  
Note: Dimensions are not guaranteed and are provided for informational purposes only. Individual room dimensions are not used to calculate overall square footage.





Second Floor Plan  
Ceiling Height = 7'-11"



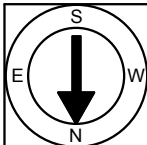
Third Floor Plan  
Ceiling Height = 10'-11"

8 Vineyard Street  
Cambridge, MA 02138



Scale 1/8" = 1'-0"

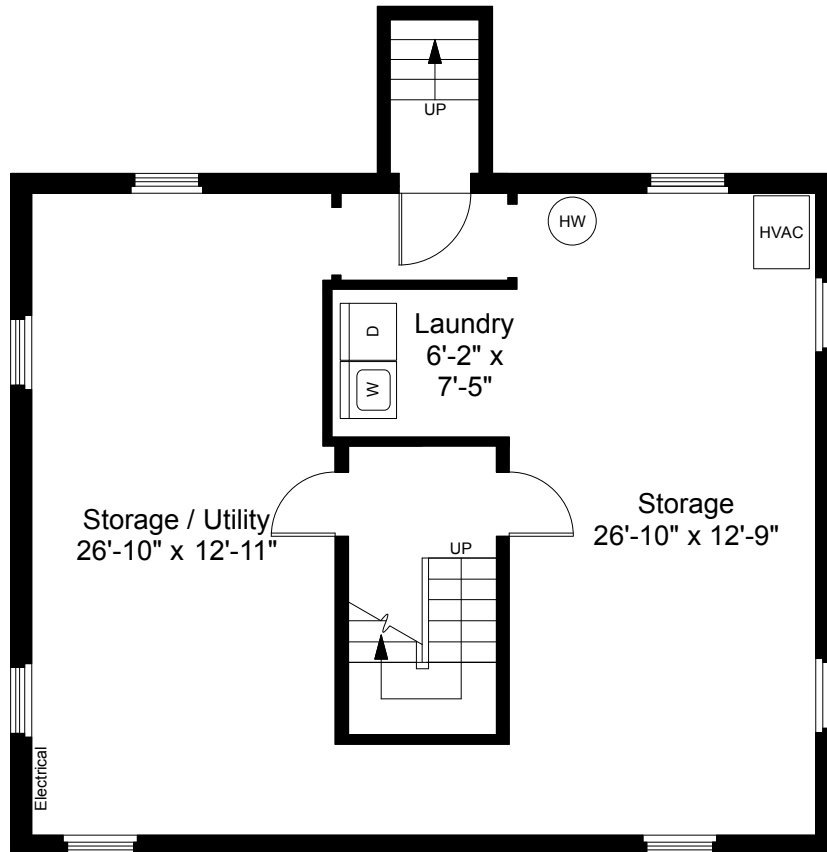
2



Completed: July 2017

Note: Dimensions are not guaranteed and are provided for informational purposes only. Individual room dimensions are not used to calculate overall square footage.

**NATIONAL**  
FLOOR PLANS  
& PHOTOGRAPHY  
(800) 328-0217



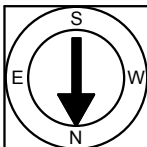
**Basement Plan**  
 Ceiling Height = 6'-10"

8 Vineyard Street  
 Cambridge, MA 02138



Scale 1/8" = 1'-0"

3



Completed: July 2017

Note: Dimensions are not guaranteed and are provided for informational purposes only. Individual room dimensions are not used to calculate overall square footage.

**NATIONAL**  
 FLOOR PLANS  
 & PHOTOGRAPHY  
 (800) 328-0217